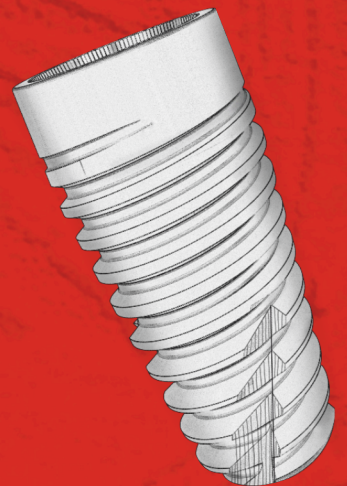




Dentcon

Dental Implant Systems



2026 DENTCON PRODUCT CATALOGUE

Packaging



Box Includes;
1 x Fixture
1x Cover Screw
3x Info Sticker

Info Stickers

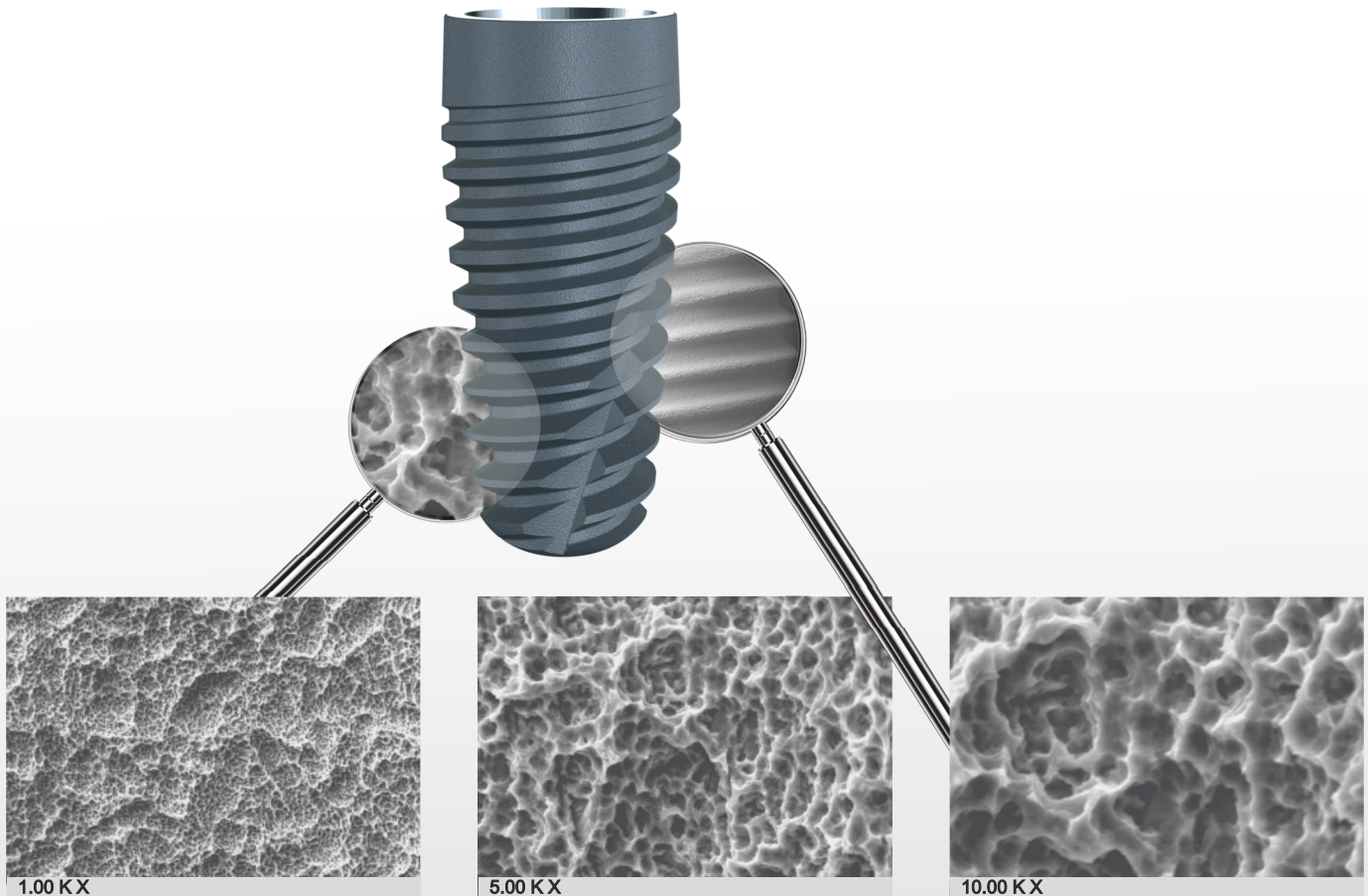


Package Labels



The Dentcon surface is specifically engineered to enhance cell adhesion, accelerate osseointegration, and support predictable long-term clinical outcomes. The surface treatment begins with a mechanical roughening process through sandblasting using aluminium oxide particles. This step is followed by a controlled chemical treatment involving large acid etching and thorough cleaning procedures to create a micro-structured surface topography. To further enhance biological activity, the surface is activated using cold argon plasma, resulting in a highly clean and hydrophilic surface with increased surface energy. This process produces a homogeneous

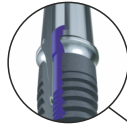
micro-porous structure characterized by micro-pits with diameters ranging between 25–35 μm . The optimized micro-topography promotes osteoblastic cell adhesion and supports early bone formation at the implant surface. The combination of controlled roughness, high surface cleanliness, and hydrophilic properties improves the interaction between bone and implant, resulting in strong primary anchorage and increased resistance to removal torque. For these reasons, this advanced surface treatment approach represents one of the most effective and widely accepted methods in modern implantology for reducing osseointegration time while improving the quality and stability of bone-to-implant contact.



Fixture Design

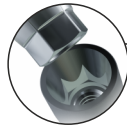
Platform Switching

With its platform switching feature, Dentcon shifts the implant–abutment interface inward, helping distribute occlusal forces more centrally within the implant. This design contributes to the protection of the crestal bone and helps prevent implant neck resorption.



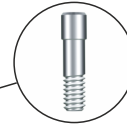
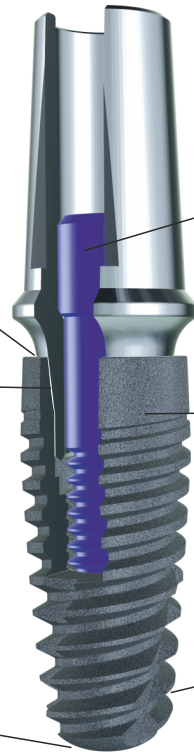
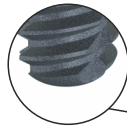
11° Internal Conical Hex Connection

The 11° conical connection design provides a long-lasting and reliable prosthetic connection.



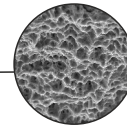
Rounded Apex

Thanks to the rounded apex, safer placement of the implant is facilitated and tissue damage is reduced.



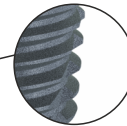
Improved Screw

With the improved M2.0 screw, Dentcon, provides a stronger connection.



SLA Surface

With its SLA Hydrophilic surface, Dentcon promotes a rapid osseointegration process.



Self Cutting Thread

Self-tapping & cutting thread grooves allow for easy insertion and optimum initial stability with a 0.8 mm thread pitch.

Platform Switching | Conical Self Locking | Morse Taper Connection | Natural Looking Results



Material

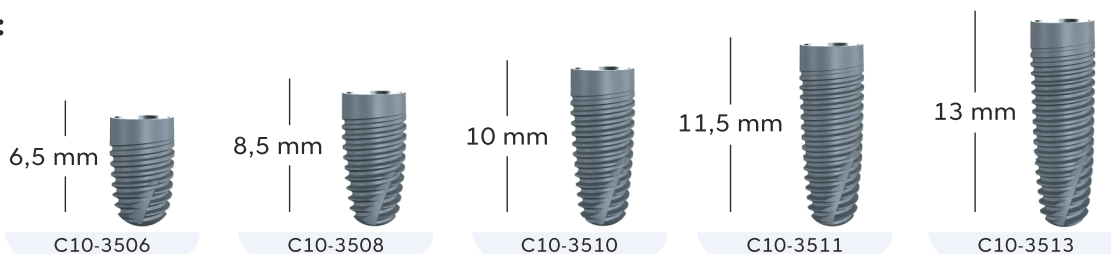
Commercially Pure Titanium (Grade 4)
Cold Worked - Resistance More Than %40
Successful result in SLA surface

Diameter/Çap:

Ø 3.5

Titanium
Grade 4

Ref No:

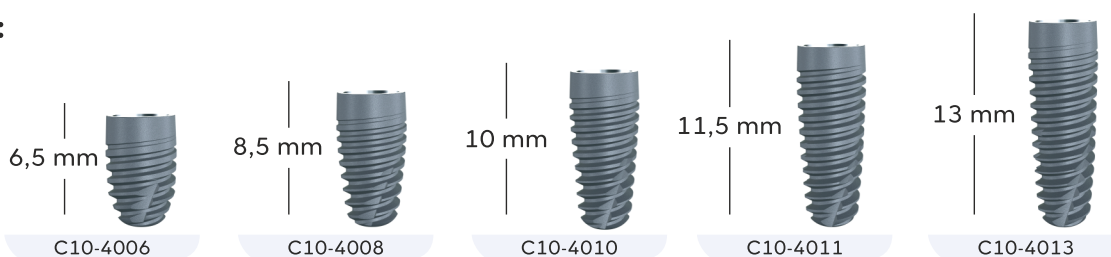


Diameter/Çap:

Ø 4.0

Titanium
Grade 4

Ref No:



Diameter/Çap:

Ø 4.5

Titanium
Grade 4

Ref No:



Diameter/Çap:

Ø 5.0

Titanium
Grade 4

Ref No:



Healing & Impression

Gingiva Former

Titanium
Grade 5



\varnothing	4.5
GH	Ref No
2 mm	CE30-GF4520
3 mm	CE30-GF4530
5 mm	CE30-GF4550
7 mm	CE30-GF4570

Analog

Titanium
Grade 5



Product	Ref No
Standard	CE32-SLA

Transfer Coping

Titanium
Grade 5



Product	Ref No
Open Tray	CE31-OTL
Closed Tray	CE31-CTS
Non- Screw	CE31-TNS

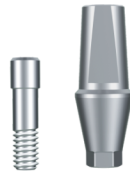
With its wide range of prosthetic products, **Dentcon Dental Implant Systems** provide great comfort for dentists and laboratories.

Straight Abutment

Ø4.5

Titanium
Grade 5

30 Ncm



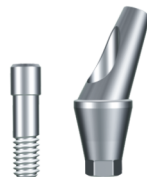
Ø	0°
GH	Ref No
1 mm	CE21-004510
2 mm	CE21-004520
3 mm	CE21-004530
4 mm	CE21-004540

Angled Abutment

Ø4.5

Titanium
Grade 5

30 Ncm



Angle	15°	25°
GH	Ref No	Ref No
1 mm	CE21-154510	CE21-254510
2 mm	CE21-154520	CE21-254520
3 mm	CE21-154530	CE21-254530
4 mm	CE21-154540	CE21-254540

Abutment Options

Ball Abutment

Titanium
Grade 5

30 Ncm

Ball Ø
2.25mm

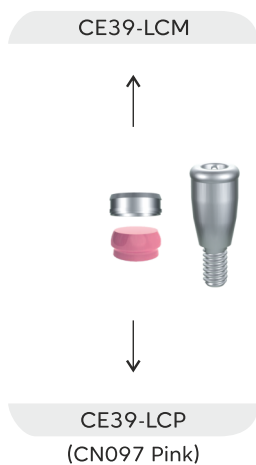


GH	Ref No
1 mm	CE24-B0010
2 mm	CE24-B0020
3 mm	CE24-B0030
4 mm	CE24-B0040
5 mm	CE24-B0050
7 mm	CE24-B0070

Locator

Titanium
Grade 5

30 Ncm



GH	Ref No
1 mm	CE25-LOC10
2 mm	CE25-LOC20
3 mm	CE25-LOC30
4 mm	CE25-LOC40
5 mm	CE25-LOC50
7 mm	CE25-LOC70

Castable Abutment Plastic

POM-C

30 Ncm

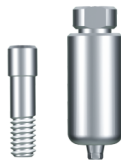


Type	Ref No
Rotational	CE35-CAR
Anti Rotational	CE35-CAA

Premilled Abutment

Titanium
Grade 5

30 Ncm



Type	Ref No
Rotational	CE29-TCAR
Anti Rotational	CE29-TCAA

Wide Body

Wide Body Gingiva Former

Titanium
Grade 5



Ø	5.5
GH	Ref No
3 mm	CE30-GF5530
5 mm	CE30-GF5550

Wide Body Straight Abutment

Titanium
Grade 5

30 Ncm



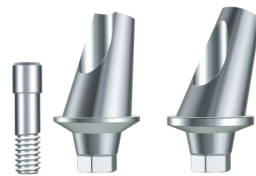
Ø5.5

GH	Ref No
1 mm	CE21-005510
3 mm	CE21-005530

Wide Body Angled Abutment

Titanium
Grade 5

30 Ncm



Ø5.5

Angle	15°	25°
GH	Ref No	Ref No
1 mm	CE21-155510	CE21-255510
3 mm	CE21-155530	CE21-255530

Straight Multi Unit Abutments

Titanium
Grade 5

30 Ncm

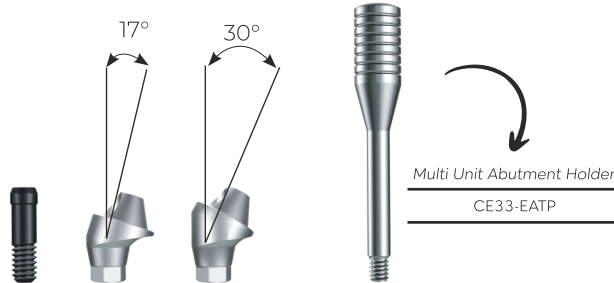


GH	Ref No
1 mm	CE23-004510
2 mm	CE23-004520
3 mm	CE23-004530
4 mm	CE23-004540
5 mm	CE23-004550
7 mm	CE23-004570

Angled Multi Unit Abutments

Titanium
Grade 5

30 Ncm



GH-Açı (Angle)	Ref No
1 mm-17°	CE23-174510
3 mm-17°	CE23-174530
1 mm-30°	CE23-304510
3 mm-30°	CE23-304530

Temporary Abutment

Titanium
Grade 5

POM-C

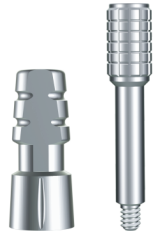
20 Ncm



Type	Ref No
Titanium	CE20-ETA
Plastic	CE35-EAACA
Plastic Hex	CE35-EACA

Multi Unit (M.U.) Healing & Impression

Titanium
Grade 5



Open Tray Transfer

CE31-EATOT



Closed Tray Transfer

CE31-EATCT

Titanium
Grade 5



Healing Cap

CE30-EGF

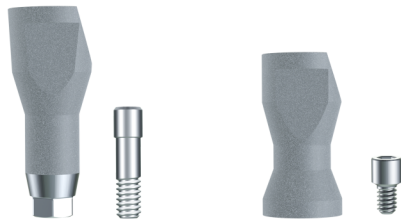


Analog

CE32-EALA

Scan Body

Titanium
Grade 5



Product	Ref No
Scan Body	CE36-SB
Multi Unit Scan Body	CE36-SBE

*Exocad

Digital Analog

Titanium
Grade 5



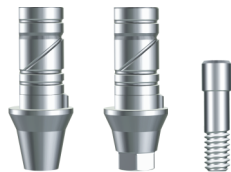
Product	Ref No
Digital Analog	CE32-DLA
Multi Unit D. Analog	CE32-DEALA

*Exocad

Ti-Base Abutment

Titanium
Grade 5

30 Ncm

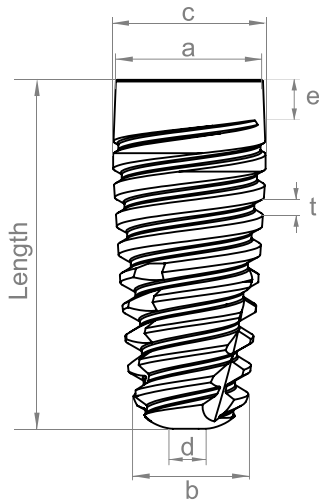


Titanium
Grade 5

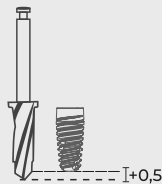
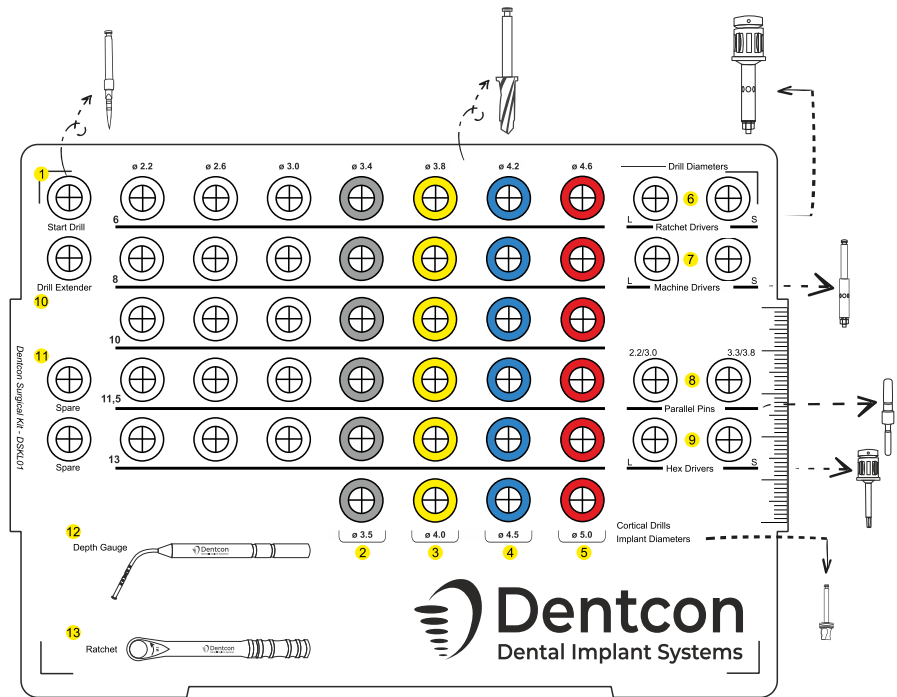
20 Ncm



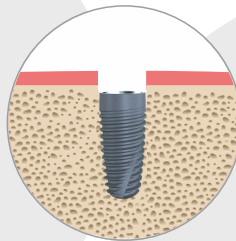
GH	Ref No
0.5 mm Standard	CE26-TBTB05
1.5 mm Standard	CE26-TBTB15
2.5 mm Standard	CE26-TBTB25
0.5 mm Non Hex	CE26-TBTBN05
1.5 mm Non Hex	CE26-TBTBN15
2.5 mm Non Hex	CE26-TBTBN25
Multi Unit	CE26-TBE



Diameter	3.5mm	4.0mm	4.5mm	5.00mm
a	3.75mm	4.00mm	4.35mm	4.80mm
b	3.00mm	3.20mm	3.62mm	4.00mm
c	3.85mm	4.15mm	4.50mm	4.95mm
d	0.40mm	0.90mm	0.90mm	0.90mm
Thread Distance	t: 0.8 mm			



Dentcon Dental Implant Systems drills are **0.5 mm** longer than fixture lengths. Planning should be made accordingly.



Code Component Name

- 1 Drill Set
- 2 Cortical Drill $\varnothing 3.5$
- 3 Cortical Drill $\varnothing 4.0$
- 4 Cortical Drill $\varnothing 4.5$
- 5 Cortical Drill $\varnothing 5.0$
- 6 Ratchet Drivers S\L
- 7 Machine Drivers S\L
- 8 Parallel Pins (Thin - Thick)
- 9 Hex Drivers S\L
- 10 Drill Extender
- 11 Spare
- 12 Depth Gauge
- 13 Ratchet

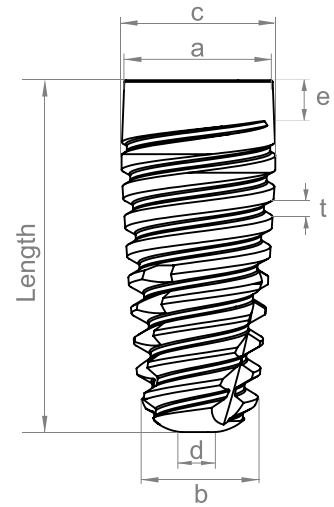
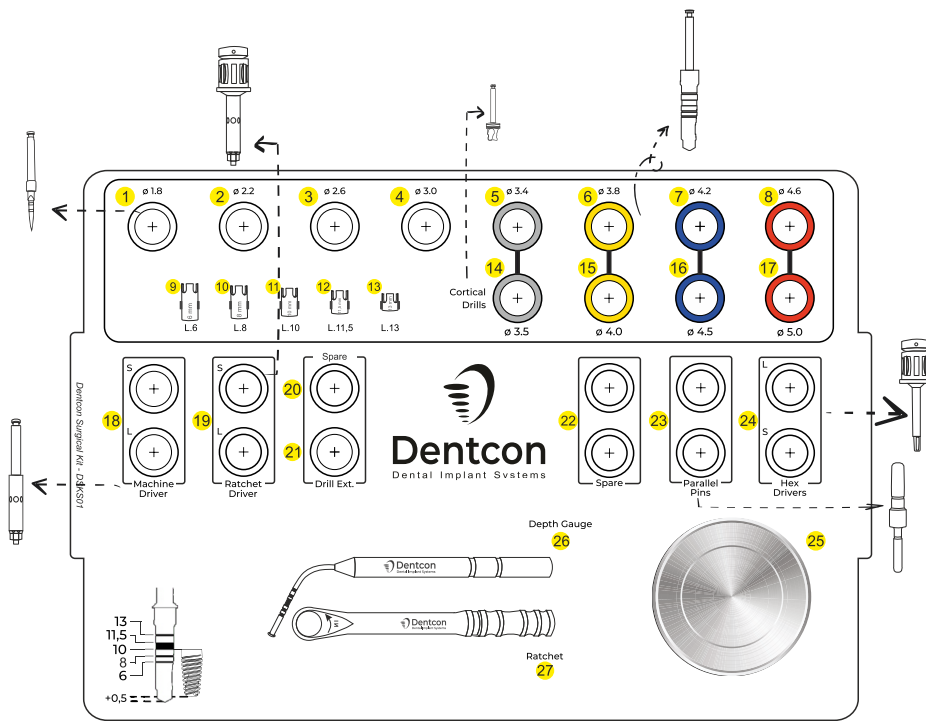
1 Drill Set

Drill Lengths

6, 8, 10, 11.5, 13 mm

Drill Diameters

$\varnothing 2.2, \varnothing 2.6, \varnothing 3.0$
 $\varnothing 3.4, \varnothing 3.8, \varnothing 4.2, \varnothing 4.6$ mm



Diameter	3.5mm	4.0mm	4.5mm	5.00mm
a	3.75mm	4.00mm	4.35mm	4.80mm
b	3.00mm	3.20mm	3.62mm	4.00mm
c	3.85mm	4.15mm	4.50mm	4.95mm
d	0.40mm	0.90mm	0.90mm	0.90mm
e	1.11mm	1.11mm	1.11mm	1.11mm

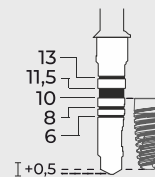
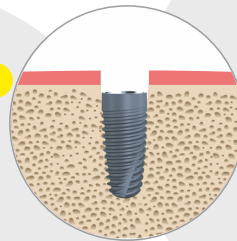
Thread Distance
t: 0.8 mm

Code Component Name

- 1 Start Drill
- 2 Drill 02.2
- 3 Drill 02.6
- 4 Drill 03.0
- 5 Drill 03.4
- 6 Drill 03.8
- 7 Drill 04.2
- 8 Drill 04.6
- 9 Stopper L. 6 mm
- 10 Stopper L. 8 mm
- 11 Stopper L. 10 mm
- 12 Stopper L. 11.5 mm
- 13 Stopper L. 13 mm
- 14 Cortical Drill ϕ 3.5

Code Component Name

- 15 Cortical Drill ϕ 4.0
- 16 Cortical Drill ϕ 4.5
- 17 Cortical Drill ϕ 5.0
- 18 Machine Driver SJL
- 19 Ratchet Driver SJL
- 20 Spare
- 21 Drill Extender
- 22 Spare
- 23 Parallel Pin (Thin - Thick)
- 24 Hex Drivers
- 25 Bowl
- 26 Depth Gauge
- 27 Ratchet Wrench



Dentcon Dental Implant Systems drills are **0.5 mm** longer than fixture lengths. Planning should be made accordingly.

Powered by Innovation

 **Dentcon**

is a brand of Dentimplant

Dentimplant Medikal Sağlık İç Dış Tic. San. A.Ş.

info@dentimplant.com.tr

www.dentimplant.com.tr | www.dentconimplant.com

 **CE** 2292



@dentimplant.tr
@dentcon.global



@Dentimplant01
@DentconGlobal



@dentimplant



@dentimplantr



@dentimplantturkey